

...
-Chapter Three-

PLEASE SIT BY SUBJECT AREA.

September Wrap Up



How did September Building Meetings go?

See
Think
Wonder



...





- *What makes you say that?*
- *Give ownership to the speaker's thoughts visually*
- *Agree or disagree with a classmate's point of view*
- *Seek to connect with a classmate for more information*
- *Everyone should have an 'on ramp' or an 'entry point'*



ELA



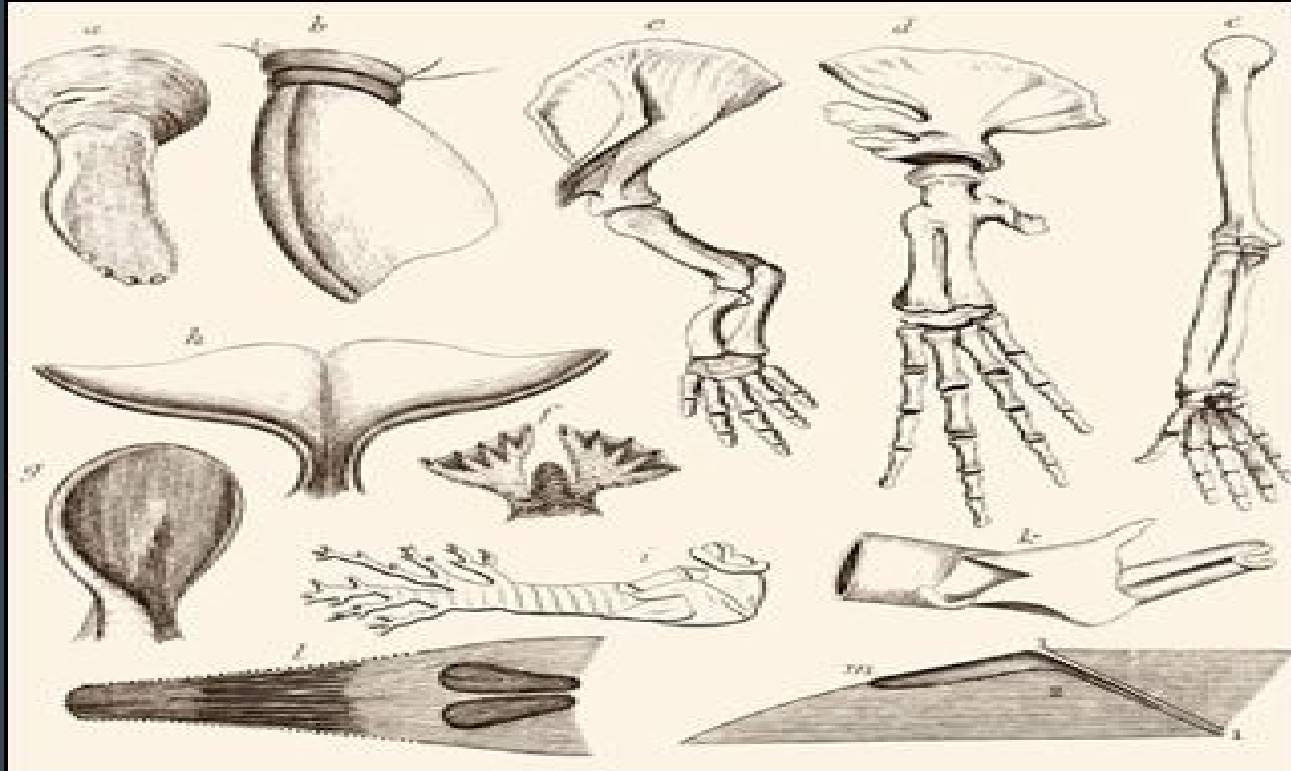
Math



.



Science



Social Studies



Arts & Related



Table Talk

How do you envision the ‘See, Think, Wonder’ routine working in your classroom?



Conditional & Absolute Language

<https://www.youtube.com/watch?v=78kjMk4Og08>

Could, Would, Should...

1. Who **could** Kesha be talking about? Make a text to self connection with a visual representation.
2. What **could** the two most powerful themes in this song be? Be sure to brainstorm all possible themes first before determining which two **should** be shared with the class.
3. Kesha has asked you to help to tweet her press release for this song. In 140 characters or less, please summarize the main idea of the piece. This **may** also include a dedication to someone or something.
4. Analyze how the author (artist) alludes to and transforms source material in a specific work. What other piece of literature **may** this allude to?
5. What **would** you infer Kesha's next song may be about? Represent your prediction in a concise #Hashtag or Headline.
6. "You brought me the flames and you put me through hell. I had to learn how to fight for myself." Would this be literal or nonliteral language? Convert this Metaphor into a **probable** simile.
7. What **could** be Kesha's motive in writing this piece.? What evidence did you hear to support your case?

Table Talk

What will you take away from this chapter and use this week?

Did anything in the chapter make you pause to think or evaluate how you form questions to students?

